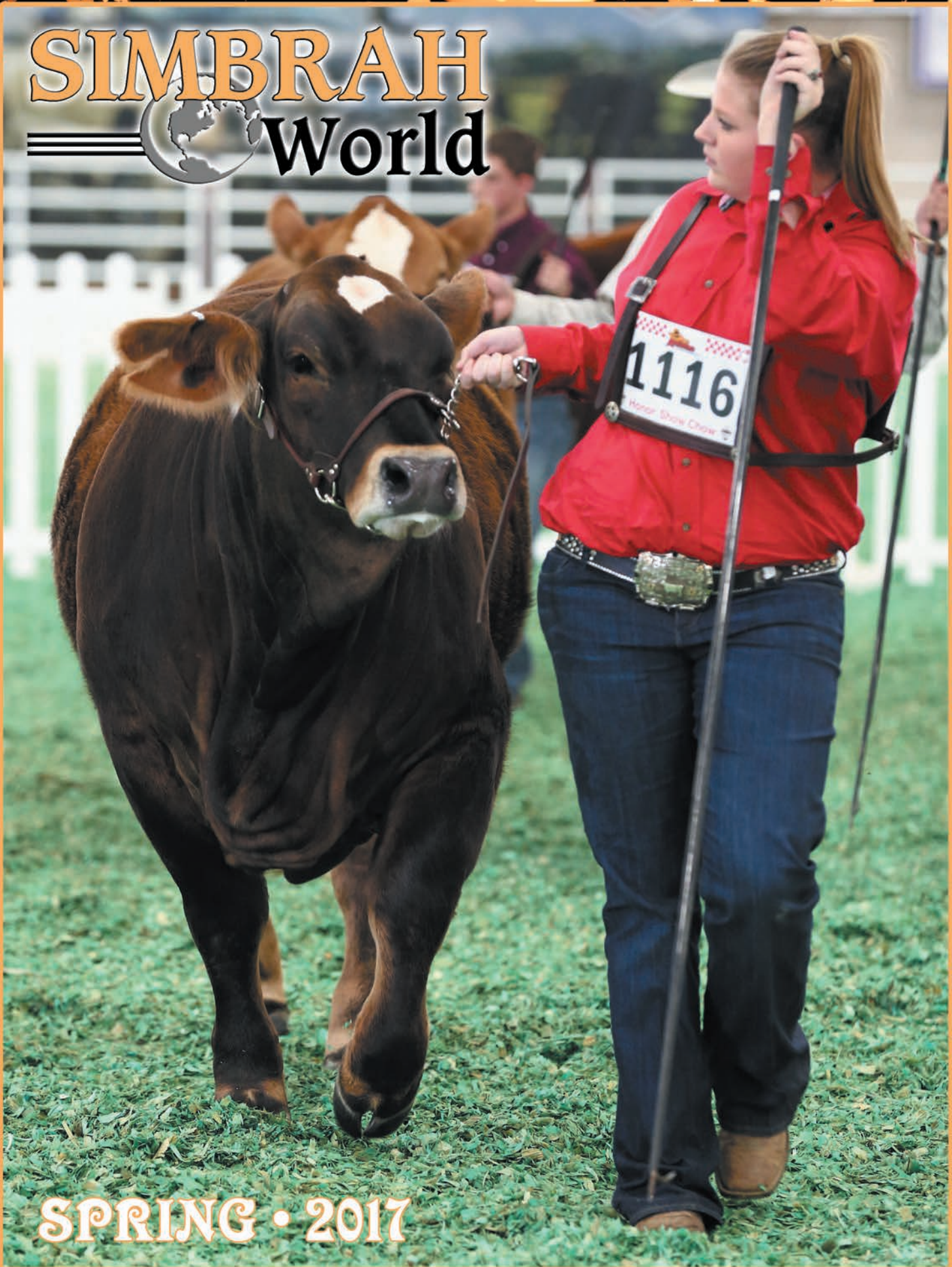


SIMBRAH World



SPRING • 2017

Market Demands QUALITY

The market demands quality in the cattle business today and that's why we have taken many steps to acquire functional, high quality individuals with proven and desired genetics and phenotypes.

When you demand quality, look to 7N, we have the herd that can deliver that to you. We are Superbowl and Synergy sponsors and invite you to mark your calendar for Simbrah Synergy X-September 23-24!



SMITH BURCH TYS DIAMOND

This one is sweet from every angle. She is a daughter of Smith Wentz Blackfoot, who is a Nu Wave II x Diva bred bull and she is out of Smith RFI Princess Kira, who is a Nu Approach x RFI Rio Princess. Blackfoot of course is a full brother to Diamond Diva and Dream Girl. She also ranks in the top 15% of the breed for TI. She brings a lot of potential and power to our program.



SMITH WHITS MISS AMAZING

We added this purebred, homozygous polled Simmental to use in both our Simmie and Simbrah programs. She's a daughter of Smith McCrary Andy Black and goes back to Built Right on the dam's side. Her pedigree includes Dream On, Triple C Amazing and a dose of Ebony's Antoinette cow. You'll want to see her progeny.



SMITH IMA BELLA 322W

We purchased this own daughter of Smith Bella Bella, the queen herself from Smith Farms. She is a purebred with Smith Nu Approach on the top side. She is a full sister to Smith Ciao Bella, the 2011 International Grand Champion and of course, Bella Bella herself was an international champion. She ranks in top 30% of the breed for API and 10% for TI. We're very excited about what she is going to add to our herd and the breed.



Pete Nieschwietz
P.O. Box 330 • Falls City, TX 78113
(956) 460-6002 • pjnieschwietz
www.7nranch.net
Ranches located in Donna and Falls City

THE FUTURE.

That's why we're breeding quality today.

We added Fireball to our program to take the quality to a higher level and we are extremely pleased with the calves he has produced for us. We are breeding him not only in our AI program, but by natural service also.

One of his first calves for our program, recently sold in Houston and we have many more like her in our program.

Fireball is a son of Smith Satisfies and out of Smith McCrary Hi Price, who of course goes back to the great Priceless and Dream On. He is a homozygous polled, purebred with an API ranking in the top 15% of the breed.

We also have a number of heifers for sale sired by RFI Red Raider, the 2014 San Antonio National Percentage Simbrah Grand Champion Bull.

If it's quality you want, consider Monte Christo.



nancy

Smith McCrary Fireball



Fireball daughter

**Mark your calendars
for Simbrah Synergy X,
September 23rd!**



MONTE CHRISTO
Cattle Co.

Jud & Margie Flowers
12111 North Bryan Road
Mission, Texas 78541

956/207-2087 • judf@lonestarcitrus.com

IMPACT FEMALES

These females have earned impact status at Smith Genetics and along with their progeny are leading Simbrah forward. In addition, we are using them in our Percentage Simbrah division to create new lines.



SMITH PRICELESS - The true defining of a great cow is her ability to transmit her style and beauty down through the generations in high performance cattle. Priceless has met this definition plus she has generated almost \$400,000 worth of genetic sales in revenue. She has many daughters to her credit that are at work in leading herds, plus sons like Smith Always In Style and RFI Thunderstruck, and now her grandson Smith McCrary Fireball is taking a place of prominence in the breed. She continues to be priceless to our program and the breed.



SMITH ISGRIG AVA - There are three generations of this cow family working in our donor program, plus several other daughters in production. Smith Isgrig Charismatic, one of Simbrah's big time sires is also a member of this cow family. Ava is one of our standouts and her influence continues to impact the breed.



**SEPTEMBER 23-24, 2017
AT THE RANCH, GIDDINGS, TEXAS**



Tim Smith, Joel Isgrig & Haley Smith
P.O. Box 330, Giddings, TX 78942
512-587-7896 • smithgenetics1@gmail.com



Features...

- 10 National Show Highlights Spring Show Season**
Purebred and percentage Simbrah breeders traveled to San Antonio to vie for title and banners at the National Show
- 20 Understand Your Livestock Insurance Coverage and Options**
An overview of livestock insurance and considerations you should make concerning your herd, as well as specific individuals within it.
- 24 Weaning: Low stress, common sense**
A look at factors that contribute to weaning stress and management practices that can be used to improve this important time in a calf's life.

Of Interest...

- 3 News You Can Use**
- 31 Save The Date**
- 31 Index To Advertisers**

On The Cover...

A scene from the 2017 National Simbrah Show.
Photo by Show Champions.



SIMBRAH World

SPRING, 2017 • VOLUME VIII, NUMBER 1

Southern Livestock Publishing, Inc.

Mailing Address:

P.O. Box 791364 • San Antonio, TX 78279-1364
Office Located: 407 Breesport • San Antonio, TX 78216
Phone: 210/524-9697 • **Fax:** 210/524-9690
E-mail: slivestock@southernlivestock.com
www.southernlivestock.com

Publishers: Jim Banner and Michael Sturgess

Editor: Daren A. McCutchen

Contributing Editor: Martha Hollida Garrett

Office Manager/Bookkeeping: Jean Tiedeman

Livestock Advertising:

Martha Hollida Garrett Mob. 903/316-8465

Commercial Advertising:

Loren Jackson - Manager 210/867-5553

Copy & Contract Regulations:

The Publishers reserve the right to accept or refuse advertising. The Publishers reserve the right to label as "Advertisement" any copy that simulates editorial comment.

Advertiser agrees to waive the Publishers and its employees of responsibility from any and all claims or suits arising out of publication of advertising based on information supplied by the advertiser or his agent.

The Publishers hereby expressly limit their liability resulting from any and all misprints, errors and/or the running of a corrected advertisement or editorial correction notice.

The views and opinions expressed in all editorial material are those of the writer or persons interviewed and not necessarily those of the Publishers.

Your viewpoint and opinions are welcome. The Publishers will make every effort to publish responsible replies. The Publishers however, reserve the right to edit or reject material which they deem objectionable.



Send your news

Let us know what's going on at your Simbrah outfit and let us help you get the word to fellow breeders. Simbrah World is published in the spring and fall, plus the Simbrah News is published monthly in Southern Livestock Standard. In addition, the website also carries news. Send your news to mgarrett@southernlivestock.com.

ETSSA sets date for picnic

The East Texas Simmental/Simbrah Association will hold their second annual picnic on Saturday, May 6th at 7P Ranch, Tyler, Texas. Mark your calendar for this fun and informative event and watch website for additional details.

Two Simbrah breeders on ASA's Executive Board

Bozeman, MT- Brian DeFreese of West Point, Indiana, a member of the American Simmental Association (ASA) Board of Trustees Executive Committee, has been elected chairman of the board. DeFreese has served on the ASA Board of Trustees since 2012. He was formally seated during ASA's 49th Annual Meeting held January 15, in Denver, Colorado. Also seated were Simbrah breeders Tim Smith, Giddings, Texas and Fred Schuetze, Granbury, Texas. Smith will serve as vice chairman and Schuetze will handle the treasurer's responsibilities for the year. Rounding out ASA's five-member executive committee are Gordon Hodges, Hamptonville, North Carolina and Barry Wesner, Chalmers,

(Continued on page 6)



Tim Smith, ASA Vice-Chairman



Fred Schuetze, ASA Treasurer

HALLAK RANCH



HR COVER GIRL, above, calf champion at the 2017 Superbowl Percentage and the San Antonio ARB Junior Shows and the 2016 Synergy Percentage Show for Mayson Elliott. Mayson also won her showmanship division at the Synergy with Cover Girl. This is a LMC Red Alert daughter.

HR FABULOUS D3, right, a class winner at the Fort Worth and San Antonio Junior Shows and the National Simbrah Show for Paige Hovey. She was also a LMC Red Alert daughter. Paige also exhibited HR Déjà Vu, a Mr Strack Y254 daughter to the reserve intermediate title at the National Percentage Show.

Cattle for Sale **SIMMENTAL • SIMBRAH • PERCENTAGE SIMBRAH**

Hallak Ranch is proud of the heifers we have out with a number of juniors and proud of the job they are doing with heifers that have the HR prefix in their names.

If you are looking for show heifers, then come look at the ones with HR in their name. We are sponsors of the Superbowl and Synergy!



Multiple Honors and Heifers

NH HALLAK RANCH

BILLY AND MALIKA HALLAK www.HallakRanch.com
1167 Oval Drive, Athens, Texas 75751 • Cell 903-203-8524 • nhalla@hotmail.com

Alamo City Simbrah Online Sale

April 3-5, 2017

Sale will feature top quality breeding pieces and lots of show heifer prospects.

Programs featured from Alamo Group members La Morra Ranch, Baring Cattle Co., Freasier Ranch and friends.

Sale will be conducted on

www.cattleinmotion.com

La Morra Ranch
210/275-0839

Baring Cattle Company
210/867-6651

Freasier Ranch
830/216-7171



J7N Calypso - A December purebred daughter of LMC Rhino.



This heifer was purchased in an Alamo Sale and has been a many time champion for Reese Gonzalez.



Full sister to this LMC LF Ambassador daughter sells in the Alamo City Sale.



Dinela 101/7 - A January Red Brahman heifer, sired by SRS Private Practice. She sells.



Full sister to this champion sells.



She sells - This June prospect is a WRS Promotion x BCC Paytons Delight, former reserve international champion.

Calf Scramble
Certificates Welcomed





Our 10th Anniversary Event

9.23.17

4:00 PM • SMITH GENETICS
GIDDINGS, TX

An offering of over 80 head of Purebred and Percentage Simbrah cattle and select Simmentals, representing the strongest cow families in the industry and sires with some of the highest overall EPD rankings in the Simbrah breed.

DONORS • PAIRS • BRED FEMALES • YOUNG SIRE PROSPECTS • FANCY OPEN SHOW HEIFERS • EMBRYOS



Smith Bella Bella

International Champion donor that has produced sale toppers and two additional generations of International Champions. Her production is one of the most influential in the breed. This Cow Family will be a feature of the sale. Owned by Smith Genetics.



LMC She Moves 136/L

She has to her credit, the Overall American Supreme Champion Female at Houston Charming Moves, as well as International Champion sons, Red Bullet and Black Bullet. The influence of this breed matriarch will sell. Owned by Smith Genetics.



Smith McCrary Fireball

This offering will be the first offering of Fireball calves. We think you will be impressed with them. Owned by Smith Genetics, McCrary Farms, Reavis Farms, Johnson Cattle Co., Monte Christo Cattle Co. and Southwestern Farms.



Smith Stout N Black

The get and service of this purebred Simmental sire sells in the Synergy offering. Owned by Smith Genetics and Reavis Farms.



Smith Satisfies

His get and service will be a strong feature of this sale. He ranks in the top 3% of the breed for API and 4% for TI. Owned by Smith Genetics and Reavis Farms.

JUNIORS - Plan to be part of the \$15,000 Synergy Showcase. You must have purchased a heifer from a qualified sponsor for the showmanship and show.

The premium money includes \$7,500 allocated to showmanship! In addition, we have leadership contests that are open to all juniors.

This offering has cattle of every category and Synergy is your connection to high quality, herd improving genetics.

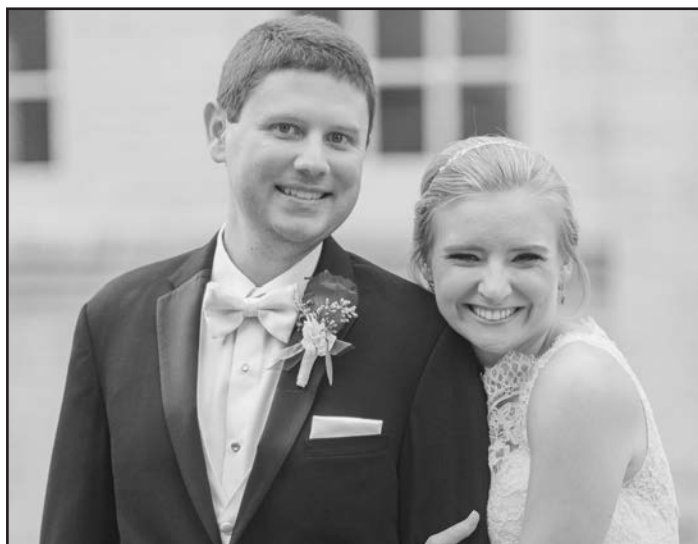
FOR MORE INFORMATION ON THE SYNERGY SALE,
CONTACT TIM SMITH, 512-587-7896, smithgenetics1@gmail.com

FOLLOW US ON  AND  #synergy16
OR VIEW THE SYNERGY TAB AT WWW.SMITHGENETICS.COM

(Continued from page 3)

Indiana.

Now completing his second, three-year term on the ASA Board of Trustees, DeFreeze has been active in the Hoosier Beef Congress, the Indiana State Fair and the Indiana Performance Tested Bull Sale. He is also a member of the Indiana Beef Cattle Association and served as president of the Tippecanoe County Cattleman's Association.



Jonathan and Brittany Tom. Photo Credit to Luke and Cat Photography.

Wedding bells ring for Jonathan Tom

Jonathan Tom and Brittany Clevenger were married on November 5th, 2016 in San Antonio, Texas at Alamo Heights United Methodist Church, followed by dinner and dancing at the historic Pearl Brewery Stables. He is a graduate of Texas A&M University and she is a graduate of the Massachusetts Institute of Technology, both earning degrees in aerospace engineering. The couple met while flight-testing the F-35 Joint Strike Fighter for the Navy and Marine Corps. The groom was raised on the Tom Brothers Ranch in Campbellton, Texas and is the son of Nancy Kay Tom and late Lytle Tom, III. The couple will reside in San Antonio, Texas.

Dunn marries at family ranch

Georgia Marie Dunn and Trent Allen Couhig were married October 15, 2016 in Floresville, Texas at the home of James and Betty Freasier on the Freasier Ranch. Close family and friends, including many Simbrah breeders were in attendance. The couple will reside in Floresville, remaining close to family and work. She is an agricultural science teacher in neighboring Stockdale and he works at the local HEB store. Although Couhig had no agriculture background before meeting Dunn in high school, the couple is passionate about agriculture, cattle, and educating young people. Both plan on being active supporters of the Texas Junior Simmental/Simbrah Association and the American Junior Simmental Association programs in the future.



(L to R) Betty and James Freasier, Georgia and Trent Couhig and Cara, Jennifer and Craig Kincaid.

Appropriately named... The Next Bella



Smith The Next Bella

Smith The Next Bella is so named because she mirrors her grandam in phenotype. She is a daughter of Smith Ciao Bella, an International champion herself, who was out of Smith Bella Bella, also an international champion. Next Bella's sire is HOC Broker, grand champion at the American Royal and NAILE. We own Smith The Next Bella with Smith Genetics.

She herself is a polled, percentage Simbrah, but she has a purebred heifer calf at side by Smith Satisfies.

She was the 2017 National Senior Champion female and we think she has everything necessary to be the next Bella and to be the next generation of greatness in this cow family.

David and Thuy Grimes
Kaleb and Katarina Fontenot
Magnolia, Texas • 832/594-7530
Temperance Livestock Company info@tmplsc.com • www.temperancelivestock.com

New chairman at La Muneca

La Muneca Cattle Co. (LMC) is proud to announce a new sire in their lineup. "LMC Chairman is the kind of herd sire we love at La Muneca. He is a docile, correct, easy moving, heavy muscled, wide based, big footed, moderate, deep sided, double polled, big boned, clean sheathed, big nuttet, good looking bull with a great who's who pedigree and good numbers



LMC Chairman

(Continued on page 22)

Thanks for the memories... and here's to the future!

Thank you Tim Smith for breeding great Simbrah cattle. Our family has had the privilege of purchasing heifers from Smith Genetics that both Caleb and Carlye have successfully campaigned across Texas. These heifers have become the foundation for our Simbrah program, and we are jointly flushing select ones with Smith Genetics. As Carlye's show career is ending, we reflect on many sweet memories and look forward to breeding high quality Simbrah cattle and being involved in the breed at this level.

It's also time for us to publically thank Tim Smith for not just his cattle knowledge and expertise, but for coaching, advising, critiquing, and mentoring Carlye. He has been invaluable and his friendship to our family means the world.

Thank you Tim!



Smith CRC Inspiration ~
2013 Fort Worth Senior Division Simbrah Champion
She is sired by Smith Nu Wave II and out of Irreplaceable.



Smith CRC Breathtaker with Smith CRC Reckoning at side ~
2015 AJSR Division Champion. Breathtaker is a Satisfies daughter.
Reckoning went on to be the 2016 National Percentage Grand Champion Bull.



Smith CRC Gracious Lady ~
2015 MAS Grand Champion Simbrah. She is a daughter of Satisfies and traces back to the Golden Glory Cow Family.



Smith CRC Amber Keepsake ~
2015 Superbowl Simbrah Champion. Her dam, Keepsake was a many time champion for Caleb and Amber is sired by Smith Satisfies.



Smith CRC Sangria ~
2016 Synergy and TJSSA Futurity Percentage Champion
Her dam, Smith CRC Golden Glory was a champion for Caleb and Sangria is sired by Smith Fierce N Black.



Smith CRC Eclipse ~
2016 Synergy and TJSSA Futurity Purebred Champion, plus 2016 TJLA Fall Classic Champion American Heifer
Her dam was Smith Raindrop, another winning heifer for Caleb. Eclipse is sired by RFI Real Deal.

In addition, Carlye was a many time showmanship winner, including
2016 Superbowl Reserve Showman,
TJLA Belt Buckle Champion Senior Showman,
TJLA Fall Classic Champion Senior Showman,
2016 TJLA Overall Champion Senior Showman,
and topping the ride with the
TJLA 2016 High Point
Champion Simbrah Heifer.

The Rodenbeck Family

2575 Old Mill Creek
Brenham, Texas 77833

(979) 251-4451

CRC_Cattle@outlook.com

SIMBRAH World • Spring, 2017 **PAGE 7**

HENSGENS BROTHERS CATTLE AND J&L CATTLE SERVICES

INTRODUCES NOT ONLY GREAT SIMBRAH CATTLE BUT OUR *newest edition:*

CT LADY *Rose* RHINEAUX



Sire: SRS Mr Pasco 812
Dam: CT Lady 380 Rhineaux 11/13

- 3/4 SISTER TO 2016 "BRAHMAN- MISS WORLD" AND 2016 "BRAHMAN- MISS NORTH AMERICA"
- DAM WAS RESERVE INTERNATIONAL CHAMPION RED BRAHMAN IN 2015
- ELITE IN HER PEDIGREE

Look for her this spring being shown by Circle T Cattle Co.!

CHECK OUT SOME OF OUR SIMBRAH CATTLE!



BCC *Delightful*
2017 National Simbrah Junior Champion Female



SMITH SWFS HB *Brightstar*
Sire: Satisfies | Dam: Smith Stacy



HENSBROS *Red Chief*
Sire: Hagan Arapaho 550A | Dam: Smith LMC Especial

BE ON THE LOOK OUT FOR FIRST GENERATION AND PUREBRED SIMBRAH HEIFER CALVES OUT OF ONE OF THE GREATEST RED BRAHMAN PEDIGREES IN THE WORLD AND SIRED BY BOTH LA MUNECA AND SMITH GENETICS BULLS! WE ARE BRINGING A GAME CHANGING GENETIC BASE TO THE SIMBRAH BREED!

J&L CATTLE SERVICES

RAYNE, LA

LANNA THIBODEAUX 337-945-3234
JOE HENSGENS 985-992-9119

HENSGENS BROTHERS CATTLE

RAYNE, LA

TONY HENSGENS 985-992-8068 JOE HENSGENS 985-992-9119
NICK HENSGENS 337-581-8188

DISCOVER THE *difference*

Our Herd Sires...



Smith McCrary Andy Black

Sired by CNS Dream On and out of Smith Andi Lu N Black. He ranks in the top 25% for API and 35% for TI. We have a number of his daughters now working in our herd and his dam is our lead Simmental donor. He is a purebred Simmental.



McCrary Smith Inspired

A son of Andy. He's a black, polled three-quarter blood, who is producing some great daughters. Ranks in the top 3% of the breed for API and TI.



Smith RFI MCCR Gangster

Sired by Smith Satisfies and out of our donor, Nuanced, who is an Andy daughter. Purebred polled sire. He ranks in the top 10% of the breed for API and TI.



Smith McCrary Fireball

Sired by Smith Satisfies and out of McCrary Hi Price, a Dream On daughter. Homozygous polled and genetically tested non-dilutor. Ranks in top 15% for API and 40% for TI.



Smith Dustin N Black

A son of Flying B Cut Above and out of a Goldmine bred daughter. Black, polled purebred Simmental. We purchased him as a calf in the 2015 Synergy Sale and his first progeny are on their way.

Discover the difference progeny from these sires can make!



**Join us for Simbrah Synergy X
September 23-24**

McCrary Farms
SIMMENTAL & SIMBRAH CATTLE

Mark & Martha McCrary

903-667-5135 • 903-278-6819

mamamc4@aol.com

307 North Runnels • DeKalb, Texas 75559

We accept calf scramble certificates.

www.mccraryfarms.net

National Show Highlights

Spring Show Season

The 2017 National Show for Simbrah and Percentage Simbrah was held as part of the San Antonio Livestock Show on February 13th. Judging the show was Jeff Bedwell from Oklahoma. The purebred show drew 77 entries, while the percentage show saw 36 head compete.

Jane Hunt, Orange Grove, Texas, saw her heifer, RFI Smith Faith, take the intermediate and grand champion honors. She is an RFI Real Deal daughter. Reserve grand and senior champion in the female show went to Dulcie Fields, Mount Pleasant, with TK/FCC Rosie, a LMC KPBR Evolution 1Z135 daughter.

Baring Cattle Co., Elmendorf, Texas, exhibited the junior champion and grand champion bull, BCC Power Driver. He is a son of BCC/CHCC

Powerman. Graceann Mullins, Golden, Texas, saw her entry of LMC 6G Golden Boy D611 win the calf and reserve grand title. He is a son of LMC Justice 5Y/127.

Other female division champions selected by Bedwell included LHH Jewel 624D, a daughter of LMC JWB Amigo 5U/286, exhibited by Ty Denny, Edinburg, named heifer calf champion, while Madison Culpepper, Gonzales, Texas, saw her entry, LMC SSC Yolanda 5D/83, a daughter of LN LMC 12th Man Y238, win the reserve heifer calf championship. Andrew Cano, Edinburg, Texas, took the reserve intermediate honor with his heifer, JACO Homemade Vanilla, a Hagans Ante Up daughter. Junior champion for the show was

(Continued on page 12)



Jane Hunt exhibited the National Junior and Grand Champion Purebred Simbrah Female.

Dulcie Fields exhibited the National Senior and Reserve Grand Champion Purebred Simbrah Female.



Baring Cattle Co. exhibited the National Junior and Grand Champion Purebred Simbrah Bull.

Graceann Mullins
exhibited the
National Calf and
Reserve Grand
Champion Purebred
Simbrah Bull.



Madison Culpepper
exhibited the
National Percentage
Grand Champion
Female.



Baring Cattle Co.
exhibited the National
Percentage Grand
Champion Bull.



Jacob Friedrich
exhibited the National
Percentage Reserve
Grand Champion
Female.



Graceann Mullins
exhibited the National
Percentage Reserve
Grand Champion Bull.

National show...

(Continued from page 10)

BCC Delightful, a BCC CHCC Powerman daughter, owned by Lizzie Herpin, Rayne, Louisiana. Reserve junior honors went to Smith JJJ Sassafras, a Smith Satisfies daughter, owned by Smith Genetics, Giddings, Texas, and Triple J/Carpenter, Sour Lake, Texas, and reserve senior honors went to Lorelai Hill, Edinburg, Texas, with RFI Razen, a Smith Satisfies daughter.



Ty Denny exhibited the National Purebred Simbrah Heifer Calf.



Andrew Cano exhibited the National Purebred Reserve Intermediate Champion Female.



Smith Genetics and Triple J/Carpenter exhibited the National Purebred Reserve Junior Champion Female.



Diamond E Cattle Co. exhibited the National Purebred Reserve Junior Champion Bull.



Charmaine Thomaie exhibited the National Purebred Intermediate Champion Bull.



Madison Culpepper exhibited the National Purebred Reserve Simbrah Heifer Calf.



Lizzie Herpin exhibited the National Purebred Junior Champion Female.



Lorelai Hill exhibited the National Purebred Reserve Senior Champion Female.



Diamond E Cattle Co. exhibited the National Purebred Senior Champion Bull.

National show...

(Continued from page 12)

Other winners in the bull division included Fields Cattle Co. with TK/FCC Slow Ride, a NF The Rumor son, taking the reserve bull calf honor. Charmaine Thoma, San Benito, Texas, saw her entry, Johnny Walker Red Label, a LMC Johnnie Walker son, win the intermediate title and a son of Hagans Ante Up was named reserve intermediate bull for Melanie Evans, Raywood, Texas. The reserve junior champion bull was exhibited by Diamond E Cattle Co., Brenham, Texas. The bull, KSSR Walk This Way, was sired by LMC Johnnie Walker. Diamond E also took the senior honor with KSSR Cowboy Crush, a RSUN Cowboy Casanova son.

Winning class honors were Bailey Warren, College Station, Texas, with TK/FCC Primrose, a daughter of LMC KPBR Evolution 1Z135; Dalton Schmidt, East Bernard, Texas with Smith MCC Dressed In Red, a McCrary Smith Inspired daughter; HR Fabulous, a LMC Red Alert daughter, owned by Paige Hovey, Boerne, Texas; LCC Rita,

a LMC Gold Medal 5Z/75 daughter, owned by Graceann Mullins; Smith RFI Dazzlin Deb, a NF Smith Sargeant daughter, owned by Smith Genetics and Reavis Farms, Mission, Texas; and LMC RMC Sassy 5C/38, a LMG Gold Medal 5Z/75 daughter, owned by Jennifer Mask, Franklin, Texas. Olivia Vela, Edinburg, Texas, won her class in the bull show with RGV AC Medicine Man D678, a son of RFI Bad Medicine.

Percentage Show

In the percentage show, Madison Culpepper exhibited the calf and grand champion female, CRCCF Mary Jane's Beauty, a daughter of LLSF Pays to Believe, and the reserve grand champion was Princess Leah, a Smith Prince Charming daughter, exhibited by Jacob Friedrich, Zabcikville, Texas, who won the intermediate division.

The reserve calf was exhibited by Josh Willey, LaVernia, Texas, with Willey Cranky Cait, a Top Notch Dream daughter, and reserve intermediate champion was BCC Star Struck, a ZKCC Chopper daughter, exhibited by Reese Gonzalez, Poteet, Texas. Junior champion female was BCC Moon

Beam, a WRS Promotion daughter, exhibited by Luke Gonzalez, Poteet, Texas, and reserve junior was HR Déjà Vu, a Mr Strack Y254 daughter, exhibited by Paige Hovey. Senior champion female was Smith The Next Bella, a HOC Broker daughter, exhibited by Smith Genetics and Temperance Cattle Co., Magnolia, Texas.

The junior and grand champion percentage bull was BCC Maverick, a ZKCC Chopper son, exhibited by Baring Cattle Co. Graceann Mullins also exhibited the calf and reserve grand percentage champion bull with Golden Vice, a Mr 7P A77 son. The reserve bull calf was RFI Awakens 30D, a son of RFI Real Deal, exhibited by Reavis Farms.

**No photos available for
National Reserve
Purebred Calf and
Purebred Reserve
Intermediate Bull.**

Your Source For Elite Genetics



We're fired up about the three NLC Upgrade daughters out of the elite donor, LMC WFC Ms. Dream Girl that we recently added to the herd from Smith Farms. Pictured is LMC BROOKE, who has a daughter selling in the TSSA International Sale in Houston as Lot 15.



Congratulations to Leroy Robert Stavino on leading his LMC Gold Medal daughter to Senior Champion Female honors at the competitive San Antonio Jr. Simbrah Show. GOLDIE also won her division last year at the same show, a tremendous accomplishment.

**BE ON THE LOOKOUT FOR OUR
GENETICS IN THE FOLLOWING SALES**
*LMC GenePLUS XVI Online Sale • March 25-28
at www.cattleinmotion.com*
*The Hunt • April 2 at 1 PM at Shipwreck Cattle
Company in Grandview, Texas.*



We also raise Polled Brahman cattle like the +LMC LF Ambassador 700/7 daughter out of JDH Lady Manso 993 that Louie is consigning to the LMC GenePLUS XVI Online Sale on March 25-28, 2017 at www.cattleinmotion.com. Don't miss out on this capacious baby doll.

Floñeca
PO Box 92 • Llaneta, Texas 78563

Louie Flores • 956-457-0205
louie@chorizosanmanuel.com

Victor Guerra • 956-607-5515
vgg03@aol.com



Louie will have a set of embryo babies for sale sired by the National Champion, LMC Gold Medal bull out of his donor, J7N YESMINA. She is sired by the San Antonio Champion Bull, LMC HS Rocco and out of La Morra's productive LMC Knockout Muneca 5M/9 donor.



Congratulations to Carlos X. Guerra III on his success with LMC LUCKY CHARM. She is a full sister to LMC Gold Medal and LMC Daydream, that we virgin flushed to the legendary LMC EF JW Black bull. We look forward to sharing her influence with the Simbrah World.

Scenes from the 2017 National Show



Benjamin Hill



Jackie and Jennifer Mills and Jordan Hinckley



National Barn Party



Kathy Reavis and granddaughter, Lindy Beth



Texas Junior Simmental and Simbrah Association Junior Board, who helped with the barn party.



Fred and Judy Schuetze



Malika and Billy Hallak



Cuatro Baring and mom, Krystal



Nelda and Joe B. Rodriguez, organizers of the barn party



Lanna Thibodeaux



Victor Moreno



Carolyn and Harper Mau

Barn Party Favorite

Nancy Rogers' Frito Corn Salad was the hit of the barn party. Simbrah World asked to share her recipe as everyone was raving about it.

Frito Corn Salad

- | | |
|-------------------------------|------------------------------------|
| 2 cans of yellow corn drained | 1 cup of mayonnaise |
| 1/2 red bell pepper, diced | 1 cup of shredded cheddar cheese |
| 1/2 green bell pepper, diced | Diced jalapenos optional |
| 1/2 purple onion, diced | 1 small bag of chili cheese Fritos |
| 1 can green chilies | |

Mix all ingredients except the chips and chill. Prior to serving, coarsely crush the chips and mix in the salad. If you do so before, the chips will become soggy. This makes 15 small servings, but is easy to double or triple.

Power, Performance & Pedigrees



6G/LMC Golden Boy

Congratulations to the Mullins Family for purchasing and showing 6G LMC Golden Boy to Grand Champion Simbrah Bull honors at the Fort Worth Livestock Show and Reserve National Champion Bull at the San Antonio Livestock Show! 6G LMC Golden Boy is one of the most exciting young herd sire prospects in the breed! His blend of Power, Function and Eye Appeal makes him unique. His pedigree is as stout, as he is sired by LMC Justice (LMC Rocco x LMC Diva) and out of a great Pigeon Mountain cow, purchased at the International Sale a few years ago. Look for this exciting prospect again in the ring in the near future!



6G Goldie

Congratulations to Robert Stavinoha and 6G Goldie on their great start to the 2017 spring show season. 6G Goldie, who is sired by LMC Gold Medal (LMC Rhino x LMC Dream Girl) was named Senior Champion Female at both the Fort Worth and San Antonio Junior Livestock Shows. She has already proven herself with her 6G Freedom sired bull calf by her side! She will become a foundation female in the 6G herd, and she is the type of female that will add Power, Substance, Body and Function to the breed.



Ambassador x Dream Girl

This female will continue the maternal strength and IMPACT that LMC WFC Dream Girl began. She brings the best of Bos indicus breeding to the Simbrah breed. Her sire, LMC Ambassador, is the polled and powerful Brahman herd bull from La Muneca, and her dam, Dream Girl, is one of the best Bos indicus females ever produced. This 3/8 x 5/8 female allows us to bring in the best genetics the Simmental breed has to offer into the Simbrah breed. Her first embryo calves are weaned and look dynamite. Look for these females in an upcoming La Muneca online sale. If you are looking for your next champion or herd sire prospect, do not miss this opportunity.



6G Batman

6G Batman is the lead prospect in an exciting set of 6G Simbrah bulls that are about to end their time in the RGV Bull Test. 6G Batman is sired by LMC Arcadio and out of our 3/4x1/4, 6G Blackberry female. Blackberry traces back to Janssen Farms' Net Investment Simmental herd sire we used and the great LMC Blueberry cow that was sired by Powerhouse and out of La Muneca's unequalled donor, 3E/89. We have a strong lineup of bulls coming off test sired by LMC Red Rock (HR Rocco x LMC Dream Girl) and LMC Justice (HR Rocco x LMC Diva). These bulls will provide all the muscle and power you need in a moderate framed package! Need Power in your calf crop...call 6G Ranch for a Power Packed Herd Sire!

IF YOU NEED SIMBRAHS — COME SEE US



Fred & Sharon Grahmann

Rock Island, TX 77470

Eagle Lake Location: 125 Arrow Road • Eagle Lake, TX 77434

Home: (979) 234-3967

Fred: (979) 758-2178 • Michael: (361) 772-0188 • Leroy: (979) 758-4671

Email us at: msgrah71@yahoo.com



THE FUTURE OF THE

High Heterosis, Highly Efficient

Lower Production Costs

Pine Ridge Ranch, Graham Feedlot 11/19/2013														
TAG	ASA	LIVE	SALE	Carcass	FAT	REA	KPH	SMAT	LMAT	AMAT	Marbling	QG	USDA	USDA
Number	Number	WT	WT	Wt, Lbs							Score		QG	YG
39Z	2,658,368	1520	1459	945	0.40	12.9	2.5	150	150	150	640	780	CH	3.0
955Z	2,826,913	1343	1289	835	0.45	14.9	3.5	170	160	165	680	793	PR	3.0
996Z	2,826,922	1528	1467	950	0.80	16.5	3.0	160	150	155	600	767	CH	3.0
959Z	2,826,914	1368	1314	851	0.35	14.4	2.0	150	160	155	480	727	CH	3.0
909Z	2,826,909	1450	1392	902	0.55	16.0	3.0	170	160	165	540	747	CH	3.0
109Z	2,657,412	1500	1440	933	0.60	15.7	3.5	150	150	150	560	753	CH	3.0
24Z	2,658,366	1457	1399	906	0.35	15.5	3.0	150	150	150	500	734	CH	2.0
987Z	2,826,918	1476	1417	918	0.30	15.4	3.0	160	150	155	540	747	CH	2.0
994Z	2,826,921	1434	1377	892	0.35	16.0	2.5	160	160	160	440	713	CH	2.0
966Z	2,826,915	1425	1368	886	0.30	16.4	3.5	160	150	155	560	753	CH	3.0
71Z	2,658,375	1438	1380	894	0.50	17.4	3.0	160	160	160	520	740	CH	2.0
105Z	2,658,379	1486	1426	924	0.40	15.8	3.5	160	160	160	560	753	CH	3.0
981Z	2,826,916	1446	1388	899	0.30	15.3	2.0	160	160	160	520	740	CH	2.0
43Z	2,658,369	1367	1312	850	0.20	15.6	3.5	160	160	160	540	747	CH	2.0
986Z	2,826,917	1425	1368	886	0.30	18.3	3.0	150	140	145	740	813	PR	1.0
990Z	2,826,919	1539	1477	957	0.80	15.8	3.0	160	160	160	680	793	PR	3.0
991Z	2,826,920	1507	1446	937	0.40	18.0	4.0	150	150	150	560	753	SE	2.0
Z805	2,830,845	1573	1510	978	0.45	18.7	3.0	170	170	170	580	760	CH	2.0
940Z	2,826,910	1068	1025	664	0.20	11.0	2.0	150	150	150	350	650	CH	2.0
Average		1439	1382	895	0.42	15.8	3.0	158	155	157	557	751		2.4

Pine Ridge Ranch has eliminated YG4s and YG5s while producing packer preferred 1,400 lb. steers. Chart shows 95% Choice with 15% Prime and 5% Prime YG1s.

Pine Ridge Ranch, LLC
www.simbrah.com



PRR Cherokee 833B, a young PRR sire.

Celebrating 40 Years of Utilizing SimGenetic Cattle

WORLD BEEF INDUSTRY

Tender and Consistent Quality Carcasses

Warmer Weather Cattle



Schedule A Visit. Currently 350 Calves On Ground And A Joy To See
Visit: www.simbrah.com
Bill and Jane Travis, 214/850-6308

KEEP YOUR EYE ON THIS ONE!



Smith JJJ Sassafras

**2016 National Reserve Junior
Champion Female**

Owned with Smith Genetics

We've been excited about this female since she arrived and every day our excitement grows about what her future holds.

She's a Smith Satisfies daughter, going back to Smith Matt N Black and NF Smith Sargeant on the bottom side of the pedigree. She currently is in the top 10% of the breed for API and 4% for TI. She is polled, solid red and loaded with quality, performance and her pedigree is proven!

**We believe great things are sure
to come from this one—
keep your eye on her.**

TRIPLE J RANCH/CARPENTER PARTNERSHIP

Jake and Amber Tortorice 409/782-5892 or 409/287-3234

Jake and Mary Tortorice • Sour Lake, Texas • jt@raosbakery.com

RFI **BAD MEDICINE** **HE'S WHAT YOUR HERD NEEDS**

Whether you want to produce stout, muscular, low birth weight bull calves or ultra smooth, feminine, capacious, low birth weight heifer calves, BAD MEDICINE is your panacea.

**Contact RGV Cattle Company or Reavis Farms
for Bad Medicine babies being born now.**

Bad Medicine semen is now available.

\$50/unit, 10 unit minimum.

Co-owned with Reavis Farms.



RGV CATTLE COMPANY

Rene, Gina, Olivia, Ava and Emma Vela
34729 Black Buck Dr. • Edinburg, Texas 78542
956-279-2200 • Rgvrene@aol.com

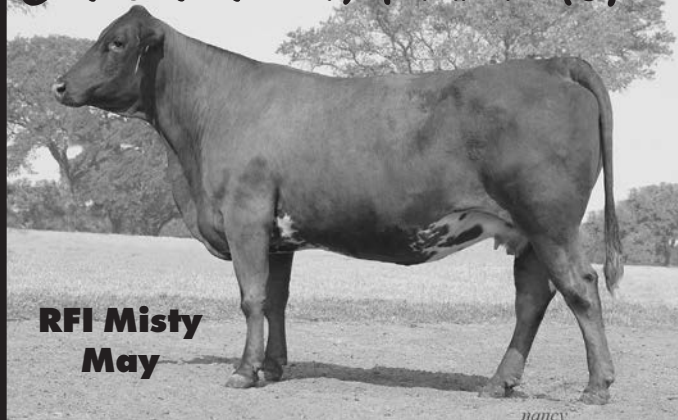


RGV Enigma is a December 15 baby doll sired by Bad Medicine that is loaded with style, femininity, thickness and capacity. We have high hopes for her in the show ring and donor pen.



RGV AC Medicine Man is a man among boys. Just an April '16 baby. He's also sired by Bad Medicine. He's got a ton of muscle, bone and volume and had a 70 lb. birth weight. His dam is sired by LMC Black Perfecto and the great ZZ Crimson Beauty. We are excited about this young stud. Co-owned with Arianna Cantu.

Calculated Additions!



**RFI Misty
May**

We've been in the Simbrah business quite sometime now, but we are always looking to add genetics that will complement our strong base and provide genetic diversity.

We purchased this female from 7N Ranch for those very reasons. She goes back to strong Reavis Farms breeding on both sides of the pedigree. She also added the breeding of the powerful three-quarter sire, Smith Nu Approach.

We are confident in this female's ability to out produce herself and add to the quality of our program.

Visitors always welcome and check out our website at www.burchcattle.com

BURCH FARMS

Rickey Burch Family • P.O. Box 755 • Hempstead, Texas 77445
979/826-3231 office • 713/206-2579 cell • burchfarms@peoplepc.com • www.burchcattle.com

WHAT A PAIR!



RFI Razen, a Smith Satisfies daughter has been an exceptional show heifer for our daughter, Lorelai. She was in the top 20 at the AJSA National Classic as just a baby, then took reserve senior honors at the 2016 Synergy, the 2017 National Show and the 2017 Superbowl. We have embryos coming from Razen later this spring.

Her bull calf at side is sired by RFI Real Deal and we are so impressed with him. Just take a look at the muscle and stoutness he has. We will be campaigning this young bull calf in the coming show year - you'll want to see him.



**We welcome your inquiries
about our cattle!**

Benjamin Hill 956-227-8239

Tonya Hill 956-566-0442

brolacocattle@yahoo.com



MAS XII SIMBRAH SHOW

Show will be in conjunction with
American Junior Simbrah Roundup in June, Crescent, Texas

Show and showmanship will be Saturday afternoon, June 14th.

You must have purchased a heifer from a participating sponsor.

5W Cattle, 6G Cattle, BETM Ranch, La Morra Ranch, La Muneca Cattle, La Negra Cattle, LPJ Ranch, Monte Christo Ranch, Reavis Farms, RGV Cattle, Smith Genetics, Top C Cattle and Brolaco Cattle.

**For details, watch Simbrah World or email
Javierlncc@aol.com**



Understand your livestock insurance coverage and options

By Martha Hollida Garrett

Insurance poor is an often-coined phrase. It's impossible to cover yourself for every eventuality, however there are some available coverages and some that help manage risk, while being an affordable option.

First and foremost, speak with your insurance agent. Farm and ranch policies have many built-in features that offer coverage for things like "animal collision" which pays (the farmer/rancher) if an animal is hit on a public road.

"Because much of Texas (check your state laws and locations) is still considered 'open range', animals hit on a road-way would, by most insurance company standards, be considered similar to hitting a deer or hog...a non-fault accident," said Texas Farm Bureau agent, Merridee Wells. "The driver of the vehicle's insurance company would be responsible for paying damages on the vehicle, with no fault assigned to the driver, while the animal owner takes the loss, unless of course he has elected to have animal collision on his policy. This is an available option on our Farm Bureau AgAdvantage policy that has a small additional annual premium and will pay for animals based on commercial market value (up to \$1500) if there is a claim," she explained. "It may not completely cover the value of the animal, but when faced with a total loss, some reimbursement is better than nothing."

Some policies might also have additional coverage available coverages for livestock, like fire or lightning. This coverage might have stated values, so if animals are victims of fire or lightning, then actual purchase price might be available, after a deductible is met.

"Again," said Wells, "these coverages are only available for the named perils, specifically if your animals are killed by either fire or lightning strikes. We see yearling operators purchasing this type of coverage when it's dry and they are grazing native or CRP pastures, which are at greater risk for fire. In addition, spring-time has more potential for loss, since we see more and frequent lightning that time of year. But of course, a loss can happen anytime. Again, these coverages are limited, and while they might pay more per individual, they are not comprehensive. They do not cover loss for sick-

ness, or injury, or death while being transported as well as several other types of loss. If a producer is looking for that type of insurance, something more comprehensive, then they need to speak with a livestock insurance specialist," Wells indicated.

Shari Holloway, Chattanooga, Oklahoma, represents Ag Risk Management Agency. Their livestock insurance is underwritten by XL Catlin.

"We offer policies for all species of livestock (cattle, horses, goats, sheep, pigs)," Holloway said.

"Cattle policies are the most popular risk management tool that we offer. The infertility endorsement, or "loss of use" coverage, has become very popular in recent years. Upon purchasing a full mortality policy on a bull seven years of age or younger, the insured may add an additional endorsement that will cover the bull if he can not breed due to accident, sickness or disease. There are two endorsements available, one that will cover "loss of use" due to permanent freeze damage, and another which does not cover any freeze damage," she explained. Most of the time in the southern United States, the freeze coverage is not a concern for cattle producers. The infertility "loss of use" endorsements for bulls are written in six months or full year terms, with renewal available with a new semen test, up to seven years of age of the bull.

"In addition," Holloway explained, "we offer what we call pasture policies that are fairly inexpensive and include a per incident deductible and are available for entire herds. These could include, but are not limited to, coverage for commercial or registered cowherds, stocker cattle or feedlots. The maximum insured amount per head for a pasture policy is \$5,000," she explained.

"These policies can include endorsements for calves born and feed poisoning. I never quote a cow-calf producer without including this endorsement. It provides coverage for the calves that are born during the policy period until the animals are sold or go into inventory as breeding animals. The additional premium is charged on the cows," she said.

Holloway noted these features:

- The big difference in this policy versus others policies that cover livestock is the drowning, accidental shooting, and contaminated feed and water coverage. Most insurance companies who write stand-alone livestock policies don't cover contaminated feed and water.

- This is a LOCATION SPECIFIC POLICY. All of an insured's locations need to be listed on the policy, but we only need a capacity at each location. We don't need to know every time an insured moves stock to another location that is listed on the policy.

- A pasture policy is also available for goats, sheep and



Registered breeders should evaluate their cattle insurance needs and existing coverage.

interestingly enough...bison.

"The equine policies cover full mortality (life insurance payable upon death) and include up to \$5,000 emergency colic surgery. Major medical is also available up to a \$15,000 limit with a deductible of either \$450 or \$300, depending on the value of the horse," Holloway went on say, "however we do not offer a 'loss of use' endorsement for horses."

Wells indicated that all Farm Bureau policies would be prorated, so livestock could be added for a period of time and then removed, with premium charged for only the time livestock was covered. However, no coverages offered by Farm Bureau would cover livestock while in transport.

"We can cover livestock for just about any time frame," said Holloway. "Usually, the minimum is for two weeks and can go up to one year and is subject to renewal at that point. Transit coverage will cover the livestock upon death. Animals in Transit endorsement extends coverage while livestock are being transported for collision, upset or overturn. Notable exclusion is collision with vehicles owned or operated by the insured," she concluded.

High valued show animals, donors and herd sires are very often insured individually for full-mortality. This allows the buyer the security to know that his investment is protected, particularly if they are being shown, since this exposes cattle to additional perils such as adding one more exposure to outside disease, as well as frequent transporting.

Cost wise, coverage is usually 5-6% of the animal's purchase price for an annual policy. Many times, once a female produces offspring or embryos, or bulls produce freezable semen, insurance becomes less necessary.

For Holloway's Agency to cover livestock they require a proof of purchase value, i.e. invoice or bill of sale. If purchased private treaty, then a health certificate from a licensed veterinarian is required. Photos or visual appraisal by the agent or appointed appraiser are usually required as well.

"We have seen an increase in demand for the infertility coverage on bulls recently with many purebred breeders offering these policies at their auctions. Some producers recognize the benefits enough that they are willing to pay a portion of the premium to encourage the buyer to purchase the coverage," said Holloway. "Traditionally, the good bull breeders in the country have always offered a guarantee for their bulls. It's just good business to do that. These infertility policies allow for the producer to still stand behind their product but without as much risk incurred," she concluded.

Both agents indicated that working with farm and ranch clients requires a one-on-one and more hands-on approach than many other types of insurance products.

"Farm Bureau prides themselves on the personal service offered by their agents," said Wells. "We need to understand their business, need to know about the properties they own and how livestock fit into the picture. If we can't insure their livestock to the degree they need, then other companies (like Holloway's) need to be included in their insurance plan."

If you have further questions about insurance offered by Texas Farm Bureau, contact agent Merridee Wells, 254-386-8131; or mwells@txfb-ins.com; Shari Holloway can be contacted regarding her products at 580-695-3788 or shari.holloway@icloud.com.

CATALYST!

She has it all to produce a new line of Simbrah genetics!

LSFR V8 Ella's Bella

Here's one you need to study. She is a dark red female with a white splashed faced. She is an extra long bodied heifer, expressing a near-perfect front one-third with good depth of body.

Her pedigree includes Mr. V8 901/4, a many time champion and one of that program's most consistent breeding bulls. Her dam is out of Smith Bella's Potential, a NF Smith Sargeant/Smith Bella Bella son, plus her lineage includes Fleckvieh breeding as her maternal granddam goes back to BHR Three Sixes SA. This is a 25% Fleck influenced 3/8 SM X 5/8 BR Simbrah. She can be mated to Fullblood or Purebred Simmental and produce fresh Simbrah genetics with meat, milk and fertility for the hot weather climates.

She is ready to flush to the bull of your choice. Call us today to discuss.



LAZY SF RANCH

Doug Schultz • 337.540.8901

Craig Schultz • 337.802.2173

Congratulations Jacob!



Smith JCC Hotshot
Owned by Jacob Friedrich
Superbowl Purebred Simbrah
Heifer Calf Champion

We want to congratulate Jacob Friedrich on his calf championship win at the Superbowl in the purebred division.

He exhibited Smith JCC Hotshot, Her dam is a daughter of a Smith Isgrig Charismatic we own in partnership with Smith Genetics. On the sire side, she carries Smith McCrary Fireball breeding, which gives her Satisfies and Priceless in her lineage. Hotshot also carries a top 15% ranking for API and TI!

We added Fireball to our sire lineup and are pleased with the calves we have. Watch for them!

JOHNSON CATTLE CO.

Wayne Johnson 830/391-2571 • Kenny Johnson 361/438-3413 • wjohnson4945@sbcglobal.net
Tim Smith consultant • 512/587-7896 • smithgenetics1@gmail.com
Follow us on Facebook-Johnson Cattle Company, Kenedy, Texas

News you can use...

(Continued from page 6)

coming off test. He is sired by LMC Black Perfecto and out of the repeat champion LMC BBS Jenna cow that is a 6G LMC Ragin Cajun x BBS Jennie Walker. He is our most exciting herd bull prospect since LMC Gold Medal. He will be our new BUTS, GUTS & NUTS MODEL. A full brother sells in our LMC GenePLUS Sale XVI on March 25-28," stated Carlos X. Guerra, partner in LMC. Semen will be available this spring.

For more information, please contact Carlos at lamunecacattle@aol.com or 956/802-1641.

Kenzie Martinez named Young Queen Victoria

Kenzie Martinez, daughter of Simbrah breeders Kenny and Tiffany Martinez and granddaughter of Robert and Sonia Martinez, earned a position in the Queen Victoria Court and will serve as the Young Queen Victoria this year.



Kenzie Martinez

(Continued on page 27)

BACK - TO - BACK



We are honored to have won back-to-back National Simbrah Calf Division titles. **LHH Jewel** (pictured right) and **LHH Ari** (pictured left) are both sired by LMC JWB Amigo 5U/286 aka "Black Knight". They are the type of quality that we strive to produce at LHH Ranch. Black Knight calves consistently exhibit the qualities that you would want not only in the show ring, but in the pasture. Come talk to us about semen opportunities and progeny on this great sire.



La Hacienda Hinojosa
The Hinojosa Family
Lucas, Norma, Lucas Jr.,
Daniel and Vanessa



32667 N. Expressway 281 Edinburg, TX 78542
(956) 381-8933

LHHRanch1954@aol.com
Find our ranch on Facebook



Pine Ridge Ranch named World Simmental-Fleckvieh Federation Golden Book recipient

Bozeman, MT-Pine Ridge Ranch, Athens and Dallas, Texas; Jim Berry of Scales Mound, Illinois, and Dr. Calvin Drake of Manhattan, Kansas, were named the recipients of the World Simmental Fleckvieh Federation Golden Book Award. The award recognizes individuals and organizations that have made significant contributions to the development of the Simmental/Simbrah breeds and were awarded during the annual American Simmental Association (ASA) activities in Denver, Colorado last month.

In 1981, after a number of years as commercial cattle breeders, Bill and Jane Travis of Pine Ridge Ranch were determined to create their own specified cattle and settled on Simbrah, a crossbreeding of registered Brahman and Simmental. They have stayed true to their original vision of producing the most heat-tolerant, efficient, high quality carcass and tender beef for the consumer. They have participated in numerous ASA and beef industry events and have provided support behind research and development along with youth programs. Bill has served as ASA's representative to the National Cattlemen's Beef Association, and together, he and Jane have been intimately involved in the World Simmental-Fleckvieh Federation and numerous international events. Jane holds a B.A. degree from Southern Methodist University, while Bill obtained a B.S. degree in engineering from the University of Texas, and later an MBA from the Harvard Business School.



Bill and Jane Travis

CARPE DIEM



We appreciate Baring Cattle Company purchasing **LMC SSC WHEEL OF FORTUNE** in the LMC Giving Thanks Online Sale. He is sired by FBFS Wheel Man and out of LMC Daydream. With their support, we raised \$4,500 for the La Muneca & Friends ANIMO award.



LMC SSC GLORIA heads up a Daydream offering selling at The Hunt on April 2, 2017 in Grandview, Texas. A full sister sired by LMC Gold Medal and a maternal sister sired by 6G/LMC Rajin Cajun also sell. They are eligible for the LMC Jr. Program, one of the most supportive in the country.

BE ON THE LOOKOUT FOR DAYDREAM PROGENY SELLING IN THESE SALES

LMC GenePLUS Online Sale – March 25-28, 2017 at www.cattleinmotion.com
THE HUNT – April 2, 2017 at 1 PM
Shipwreck Cattle Company in Grandview, Texas



LMC DAYDREAM is sired by the 2011 International Champion Bull, LMC Rhino and is out of the International and National Champion, LMC WFC Ms. Dream Girl. We appreciate everyone who has shown interest, bid or bought Daydream progeny and we have a great set for sale in 2017.

DAYDREAM PARTNERS

Cody Scogin Seale Show Cattle

Victor G. Guerra

P.O. Box 92 • Linn, Texas 78563

956.607.5515 - Victor • 936.201.8272 - Joe



LMC SSC YOLANDA was a top seller at the Black Label Sale last October. Congratulations to Madison Culpepper for leading her to Reserve Calf Champion honors at her debut in the National and Junior shows in San Antonio. She is sired by LN LMC 12th Man and out of LMC Daydream. We appreciate the Culpepper Family for their support and the fine job they are doing with her.



LMC SSC MARLA and her full sister LMC SSC Melinda will sell in the LMC GenePLUS XVI Online Sale on March 25-28, 2017 on Cattle In Motion. They are sired by the exciting 3/4 Simmental x 1/4 Brahman 6G/LMC Rajin Cajun and out of LMC Daydream. A tremendous opportunity to capitalize on fresh genetics and be eligible for the La Muneca Junior Program.



Weaning: low stress, common sense

By Travis Meteer, University of Illinois

Weaning is arguably the most stressful event in a calf's life. Combining stressors at weaning can inhibit immune response, triggering health problems and shut off gains. Fortunately, cattle producers can understand stressing events and manage against the freeway pile-up that can occur at weaning.

Four Major Types of Stress

Knowledge of the four major types of stress can help producers devise a weaning strategy around reducing them.

1.) Social stress: Prior to weaning, the calf has had mother as a guide for social hierarchy. She serves as a guide to food, she provides milk and takes the calf to new forage and offers a "home base" for protection. The calf, prior to weaning, spends time following mother and using her as "home base."

2.) Physical stress: In many cases, calves are gathered and worked at weaning. This means the physical stress of being hauled, run through a chute, given shots, castrated, and dehorned can all occur simultaneously to other listed stressors.

3.) Nutritional stress: The calf no longer has milk. Changing from a grass/milk diet to a hay/grain diet can be stressful on the animal and its digestive system. Any change in diet may result in unfamiliarity and lower feed intake. A change in the type of water source can be a stressor. Weaning is not the time to teach an animal to drink from an automatic waterer.

4.) Environmental stress: The obvious environmental stressors would include dust, mud, and lack of shelter/shade. These environmental stressors need to be managed. Additional stressors you may not think of would be the sights and sounds of tractors, people, and pets. The frequency of these interactions are likely far greater than prior to weaning. Removing the calves from a pasture and hauling them to a drylot may mean a totally new environment and all these stressors can take hold.

Low Stress Weaning Strategies

Weaning can be a lot easier on you and the calves. Here are a few strategies that are easily deployed to lower stress at weaning time.

•Creep Feeding- Providing creep will increase the familiarity of the feed when the calf is weaned. Using a similar diet for creep and post-weaning rations will help ensure cattle have good intakes at weaning. Good intake is the foundation to healthy calves as proper nutrition will support immune system responses. Economics of creep feeding will vary from year to year.

•Pre-Wean Castrate and Vaccination- Running cattle through the chute for castration and vaccination BEFORE weaning is a good practice. Castration at birth may be an option if you do not plan to retain bull calves, but can decrease weaning weights. Pre-wean vac and castrate can occur around 60 days post calving when a calf implant can be used on culls. Letting calves handle these stressors while still having their mother at their side will lessen the stress significantly.

•Fence-line Weaning- Research has shown calves that are fence-line weaned eat more, rest more, and vocalize less than calves separated and weaned in a drylot. They also gained 27 lbs. more in the two weeks post weaning and still had a 13 lb. advantage after 10 weeks. Thirteen pounds is worth at least \$26.00 in today's market. The familiarity with the environment (pasture), the feed (grass and creep), and the sight of their mother all help reduce the stressors on the calf. Fences need to be equipped to keep the separation. Hi-tensile electric fence that has 4 or 5 strands or a 5 strand barb with an offset electric wire work well. The more exposure the calf has had to working electric fence, the less extravagant your weaning fence will need to be.

•2-Step Weaning- Fast catching producer's attention is the use of plastic nose flaps that inhibit the calf from nursing mother, but still allows full physical exposure to her. This system does require two trips through the chute to insert and take out the weaning device, but in many operations this coincides with pre-weaning vaccination. Most testimonials share success with the nose flaps being left in for 4-10 days.

Common Sense Approaches

No matter what system you choose to deploy on your farm, apply some common sense weaning approaches. Simply paying attention to other potential stressors can help improve the welfare of weaning and gains of cattle. Some common sense approaches would be:

- Avoid dusty or muddy pens as location for weaning. Dust can be a large irritant to eyes and lungs which could result in more pinkeye and respiratory issues. Mud can increase maintenance requirements and decrease performance.

- Ensure that the water is familiar and placed in the travel of the calf. Water is the most important nutrient. Fresh, cool water that is in a familiar waterer will help calves stay healthy and on feed.

- Feed a nutrient dense diet at weaning. Intake will be lower than normal at weaning, thus making sure calves are getting enough nutrition will demand a nutrient dense feed. Avoid any filler feeds at weaning that lower nutrient density or could be sorted by more aggressive animals skewing the diet for more timid calves.

- Avoid drastic changes in diets. If calves have only consumed pasture and milk, a heavy concentration of grains is not best. The ruminant stomach is sensitive to pH changes that occur in rapid, extreme shifts from grass (fiber) to grains (starch). Using fiber-based co-product feeds and a balancing mineral supplement are better in this scenario.

- Include mineral in the feed to ensure consumption. Do not rely on the calves to consume free choice mineral. Ensuring adequate and balanced mineral consumption during weaning is important to aid the immune system. Injectable trace minerals are an option and recommended in nutritionally stress calves or calves coming out of a drought area.

- Start the calves with good quality grass hay as the

roughage. Alfalfa is too high protein and will cause the calves to be loose in most cases. I suggest feeding small square grass-mix bales. Calves need long forage for scratch, to initiate cud chewing. However, calves do not need to camp at a round bale all day long and fill up, discouraging them from eating nutrient dense supplement.

- If you have some variation in weight, and small calves are not getting their fair share, think about locating another bunk in the back of the pen or even a good lick tub to allow smaller calves a chance at receiving nutrition.

- Pre-vaccinate calves if you plan to mix groups. Mixing calves from different farms will be another stressor. Mixing results in new social hierarchy and potentially new bacteria and disease pressures. If you are regularly mixing calves, consider prophylactic usage of antibiotics (on-arrival).

- Sort bulls out from heifers and steers. Obviously, bull calves could have the capacity to breed heifers at time of weaning. Moving cattle up on feed and eliciting good gains can trigger some sexual maturity in heifers. Keeping bulls separate is a good practice.

Summary

Lowering stress at weaning is low hanging fruit on your farm... time to pick it. A little thought and planning can result in huge savings in medication used to treat sick, higher average daily gains during the weaning period, and better welfare for the calf and your mother cows. Calf prices are high and feedlots want healthy calves, so it makes sense that paying attention to how you wean is worth your time.



JUNE 21-24

18th Annual American Junior Simbrah Roundup (AJSR)

will be held June 21-24 at the Wharton County Youth Complex,
Crescent, Texas.

The event is the highlight of the year for young Simbrah exhibitors.

3 Age Divisions • Great Prizes • Lots of Fun
Lots of Leadership and Education Scholarships

OPEN TO JUNIOR SIMBRAH EXHIBITORS ACROSS THE COUNTRY!

Everything you need to enter, make motel reservations and even study material
can be found on the website.

www.simbrahroundup.com



What a **FINALE!**

This Spring Show Season marks the finale for what has been a wonderful experience for our family. The years have included four kids, many heifers, hours in the barn, lots of wins and losses and many wonderful experiences.

It's been quite a final run for us, as Jane's heifer, RFI Smith Faith has been in the purple and winner's circle at Fort Worth and San Antonio. While this final run is bitter sweet, it's also been exciting and rewarding for our family. In addition, we have all made friends and our kids have benefited greatly not just from the experiences, but from the relationships they have been fortunate to develop.

We want to personally thank Tim Smith and the Carlos Guerra family for their guidance, friendship, mentoring, coaching, and for supporting us every step of the way. We have been blessed to own very competitive show heifers from both programs and their advice and support has been invaluable. These two operations give so much to the youth of this breed and we want to extend our thanks and appreciation to them.

While this may be our finale in the junior show circles, we plan to continue being involved in the Simbrah breed.



RFI Smith Faith

Sired by RFI Real Deal
2017 National Grand Champion Female
2017 Superbowl and San Antonio Junior
Simbrah Show Reserve
Grand Champion
2017 Fort Worth Junior Champion



LMC ATZ Miley 5W/25

Sired by LMC EF JW Black 3N/225
2009 and 2010 Simbrah Synergy Grand Champion
2010 Houston Calf Champion
Full sister to LMC ATZ Dr. Feel Good

Steve & Mary Beth
Atzenhoffer
and Family

P. O. Box 933
Orange Grove, Texas 78372
satzenhoffer@ogisd.net
361/389-8733

News you can use...

(Continued from page 22)

She and her family reside in Victoria, where she is a sixth-grader and actively shows Simbrah and Simmental heifers in junior shows. In reference to the competition, she cited her experiences showing cattle and competing in educational contests as great confidence builders. These activities paved the way for her to handle the competition and responsibilities of the queen title.

Alamo City to host sale

The Alamo City group has announced that their spring sale will be held April 3-5. The sale will be online through www.cattleinmotion.com and members of the group include Baring Cattle Co., Freasier Ranch and La Morra Ranch. For additional information contact Joe B. Rodriguez, 210/275-0839.

La Muneca announces event/sale dates

La Muneca Cattle Co., Linn, Texas, has announced that their annual Jackpot Show will be held at the ranch on March 24th, followed by the \$ellabration Junior Show on March 25th in Linn, Texas. In addition, they will host online sales on

(Continued on page 28)

ESTES RANCH

Simbrah-Simmental



*Your new source for Purebred Bulls and Heifers,
as well as Commercial Simbrah-Angus Heifers*

Our family has been raising cattle in the same location since 1897, come and see what we have been up to over the past 120 years.

We started raising Simmental in 1981 and Simbrah in 1985 and think it's about time to start sharing our genetics with everyone else.

ESTES RANCH

Paul Estes 580-675-2407 home, 940-357-1454 cell
Dr. Ben Estes, DVM 940-357-1483 cell • estesfamily@swoi.net
4100 CR 290 Wellington, TX 79095

Banner Winning Bulls

MAKE THEM PART OF YOUR PROGRAM

Diamond E Cattle Co. is proud to have exhibited the Reserve Grand Champion Simmental Bull and the National Senior Champion Simbrah Bull at the 2017 San Antonio Livestock Show.



MR CFBAR ACE 2017 San Antonio Reserve Grand Champion Simmental Bull. Sired by Combustible, a Steel Force son, with Star Power and Knezek breeding maternally. Black, Polled Purebred Simmental.



KSSR COWBOY CRUSH 2017 National Senior Champion Simbrah Bull. Sired by RSUN Cowboy Casanova and out of Knezek's famous Glamour cow. Red, Polled Purebred Simbrah.

**NOW
OFFERING SEMEN
ON BOTH BULLS.**



**PLEASE CONTACT US
FOR PRICING AND
DETAILS.**

Ron & Linda Eilers 979/530-8069
1641 Spring Creek Rd., Brenham, TX 77833
roneilers81259@gmail.com

Dustin & Shelley Dippel 979/251-1810
1336 Lakeview Rd., Fayetteville, TX 77940
shelley.dippel@gmail.com

DIAMOND E CATTLE CO.

Ψ≡ Pebble Creek Farm

The Brand of Excellence for over 40 years
Leading Genetics from the Best Bloodlines



Robert W. Barth & Family
P.O. Box 589
Cuero, TX 77954
(361) 676-5303

*Most of our cattle rank in the top 1%
of the breed for API and TI.*

*Purebred Simmental, 3/4 Simmental,
Purebred Simbrah.*

Black & Red Bulls, Heifers, and Steers available.

We have many major show cattle prospects for sale.

We selectively breed for temperament, docility and maternal traits, while producing beautiful cattle. We hand feed most show projects to allow both the novice and the experienced to be competitive in the ring... but expect all of our cattle to be front pasture quality and productive breeders.

News you can use...

(Continued from page 27)

www.cattleinmotion.com. The La Muneca Cattle Co. GenePLUS Online Sale XVI will be March 25-28; La Muneca Cattle Co GenePLUS Online Sale XVII will be June 24-27, and LMC GenePLUS Online Sale XVII is scheduled for August 26-29.

HOTSSA plans sale

The Heart of Texas Simmental/Simbrah Association (HOTSSA) will hold their online sale, September 16th. The sale will be broadcast. For additional information contact Robert Piper, president at 830/305-4550.

Simbrah Synergy X set for September

Sale host, Tim Smith, announced that Simbrah Synergy X will be held the fourth weekend of September. The date for the tenth annual event will be the weekend of September 23rd and 24th. It will include a sale, a junior show for qualifying heifers, showmanship and educational contests. For additional information contact Smith at 512/587-7896 or smithgenetics1@gmail.com.

Juniors, mark your calendars

Junior Simbrah exhibitors mark your calendars for the

summer shows. The Texas Junior Simmental/Simbrah Futurity will be held, June 8-11 in Bryan-College Station, Texas, while the American Junior Simbrah Roundup will be June 21-24 in Crescent, Texas. The American Junior Simmental Association (AJSA) South Central Region Classic will be June 14-17 in Springfield, Missouri, while the AJSA National Classic will be July 9-15 in Hattiesburg, Mississippi. Please check the respective websites for entry deadlines and ownership date requirements.

**To advertise in Simbrah
World,
Simbrah News
or the web, contact:
Martha Hollida Garrett
mgarrett@
southernlivestock.com
903/316-8465**

*It was a banner
day....*

Golden Vice

Three-quarter x One-quarter Simbrah Bull. We bred this bull and he is a son of Mr. 7P A77, who goes back to Ankonian breeding. 2017 National Reserve Grand Champion Percentage Bull.



LMC 6G Golden Boy

Purebred Simbrah. Sired by LMC Justice 5Y/127, who goes back to Rocco and has Ocho breeding maternally. 2017 National Reserve Grand Champion Purebred Bull.



THE 2017 NATIONAL SHOW WAS A BANNER DAY FOR OUR FAMILY, AS WE WON TWO BANNERS AND TITLES: RES. GRAND CHAMPION PERCENTAGE SIMBRAH BULL AND RES. GRAND CHAMPION SIMBRAH BULL. CONTACT US ABOUT ADDING THE POWER OF THESE BULLS TO YOUR PROGRAM.

Golden Star Simbrah Jason, Amanda, Emily and Graceann Mullins
P.O. Box 101, Golden, Texas 75444 • 903/850-5545 • Ajmullins95@yahoo.com


Heart of Texas
Simmental/Simbrah Association
Fall Fest Sale
An Online Offering
on 9-16-17

We are now taking consignments.
For additional information contact:
Robert Piper - 830/305-4550
Jim Carter - 254/697-1078
Jim Ethridge - 979/255-2882



RIO GRANDE VALLEY

THE BIRTHPLACE AND CAPITAL OF SIMBRAH

The RGV is the source for the most Simbrah cattle in the USA within one hour of each other. So if you are in the market for a show heifer, a commercial or herd bull, come see us here in the RGV. If we don't have it, we can sure help you find it and have a good time doing so. Many of Simbrah's leaders are from the RGV – from the late Bud Wentz helping start the breed in the late 60's to La Muñeca starting their annual Jr. Educational Round ups in the late 80's to the first Simbrah steer show in the early 90's and MAS in the early 2000's, you can count on RGV breeders to **MAKE THINGS HAPPEN** for Simbrah.



Thank You to the Evans Family on their recent purchase of another Brolaco heifer. BLCO Daisy is a % Simbrah sired by RS&T Homeboy. She ranks in the top 2% in API. Contact us for your next show prospect!



Monte Christo is selling three of our best keeper heifers at the prestigious TSSA Sale in Houston. They are all red, gentle, polled with good numbers and State of the Art pedigrees. Call us for more info.



CONGRATS to Jane Hunt for winning the 2017 National Champion, Reserve Super Bowl & SA Jr Shows with her RFI Real Deal daughter purchased from Reavis-Smith. Good Luck at A&M!

1 7N Ranch-Donna
Nieschwietz Family
956-460-6002
pnieschwietz@sbcglobal.net

2 Brolaco Cattle Co.-Linn
Benjamin & Tonya Hill Family
956/227-8239
brolacocattle@yahoo.com

3 KQ Cattle - Linn
Pepe Guerra/Sam Correa
956/330-5408 or 566-4619
sobxagg83@yahoo.com

4 La Hacienda Hinojosa-Edinburg
The Lucas Hinojosa Family
956/381-8933
LHH Ranch1954@aol.com

5 La Muñeca Cattle Co.-Linn
Carlos X Guerra Family
956/383-7566 or 802-1641
www.lamunecacattle.com

6 La Negra Cattle Co.-Edinburg
Javier Moreno Family
956/607-7408
javierlncc@aol.com

7 LPJ Ranch-Linn
Luis Flores Jr. Family
956/457-0205
Louie@chorizosanmanuel.com

8 Monte Christo Cattle Co.-Edinburg
Jud and Margie Flowers
956/207-2087
judf@lonestarcitrus.com

9 Reavis Farms, Inc.-Mission
Randy Reavis Family
956/585-6831
www.reavisfarms.com

10 RGV Cattle Company-Edinburg
Rene Vela Family
956/279-2000
rgvrene@aol.com

11 Top C Cattle Co.-Pharr
Benny Cano Family
956/499-5129
topccattle@gmail.com

12 Vela Cattle Co. - Edinburg
Aaron I. Vela
956/279-8901
aaron@velalaw.com



All of us at La Negra are proud of our new herd bull LMC BBS Polled Rambler sired by LMC Gold Medal and BBS Jennie Walker – two of the breed's all time greats. There are lots of good bulls to pick from on the RGV Test.



and was harvested by Marco Flores this past season at 7N's new ranch.

If interested in a top South Texas trophy whitetail buck hunt, give Pete Nieschwietz a call. This buck scored 187 B&C



CONGRATS to the Mullins family for winning Reserve National Champ with LMC 6G Golden Boy. We are also very proud that 5 of the 8 Super Bowl Showmanship Division Champs are LMC Jr. Team members.



SIMBRAH CATTLE LITTLEFOOT CATTLE COMPANY

Doug, Karen, Daniel and Kevin Lightfoot

4410 Meyer Road • Needville, Texas 77461
Home: 979/793-3482 • Cell: 832/473-0671
dlitefoot@yahoo.com • www.Littlefootcattle.com



- * Semen & Embryo Sales
- * A.I. & ET Equipment Sales
- * MVE & Taylor Wharton Tanks
- * A.I./Palpation Clinics
- * TruTest Scales
- * Professional Exporting & Importing
- * Semen & Embryo Warehousing
- * A.I. Consultation

Bovine Elite, LLC

3300 Longmire Drive • College Station, Texas 77845
800-786-4066 • 979-693-0388 • 979-693-7994 Fax
carl@bovine-elite.com • www.bovine-elite.com

KATHY HUTTO & JEFFREY REED

9660 FM 713
Dale, Texas 78616
512/507-5718

Embryos for sale sired by Charismatic
Simmental and Simbrah

For cattle information contact Tim Smith, 512/587-7896



Featuring Sargeant daughters

Ronnie Reeves

9660 FM 713
Dale, Texas 78616
512/507-5719
rrtranspo@yahoo.com

STARTING WITH THE BEST BURESH CATTLE



We have the influence of Priceless in our young program.

Bob Buresh
5152 Loma Alta Drive • Frisco, Texas 75035
For information contact our consultant,
Tim Smith, 512/587-7896

SHALLOW WATER RANCH

Your Leading Source for Black Simbrah Cattle - Since 1993

REGISTERED BLACK SIMBRAH BULLS FOR SALE



Bobby & Jeanne
Thornhill
21501 CR 496
Rising Star, TX 76471



SWR Black Chief
Homozygous black, purebred Simbrah.



Ranch
254-643-6715
Cell
325-647-4030



Terry Reagan Auctioneer

210-414-4411
215 W. Bandera Rd., Ste. 114-624
Boerne, Texas 78006
rancherspub@gmail.com



KENTUCKY DIVISION
Quarter Horses, Simmental and Simbrah Cattle



Smith Andy N Black

Jason Smith, Aimee & Andy Nienaber, Lisa & Nathan Naive, William & Beth Smith
For information contact Tim Smith, smithgenetics1@gmail.com • 512/587-7896

LOST CAUSE RANCH

Jody Matejicek

7189 CR 180 • Anderson, Texas 77830
979/224-3121 (c)



lostcauseranch@yahoo.com

RND Cattle Services

Roberto N. Davila

Semen, Embryos, Custom AI Services
International Live Cattle Marketing

P.O. Box 2133 • College Station, Texas 77841
(956) 975-9050 • rndcattle@gmail.com • Se habla español

Save the date...

- March 7- International Simmental/Simbrah Sale, Houston, Texas.
- March 8-International Simmental and Simbrah Shows
- March 15-Rio Grande Valley Livestock Junior Shows, Mercedes, Texas
- March 16 Rio Grande Valley Livestock Open Shows, Mercedes, Texas
- March 18-Houston Junior Simmental Show, Houston, Texas
- March 19-Houston Junior Simbrah Show, Houston, Texas
- March 24-25 LMC Jackpot and \$ellabration, Linn, Texas
- March 25-28 LMC GenePLUS Online Sale XVI
- April 3-5-Alamo City Simbrah Online Sale
- May 6-East Texas Simmental/Simbrah Association Picnic, Tyler, Texas
- May 20-BHR's 23rd Annual Designer Classic Sale, Granbury, Texas
- June 8-11-Texas Junior Simmental/Simbrah Futurity, Bryan, Texas
- June 21-24-American Junior Simbrah Roundup, Wharton, Texas
- June 24-27-LMC Gene PLUS Online Sale XVII
- August 11-13-TSSA Convention, San Antonio, Texas
- August 26-29-LMC GenePLUS Online Sale XVIII
- September 16-Heart of Texas Simmental/Simbrah Association Online Sale
- September 23-24-Simbrah Synergy X, Giddings, Texas
- October 7-30th Annual LMC Jr. Round Up & Futurity, Linn, Texas

Index To Advertisers

6G Cattle Co.15	La Negra Cattle Co.29
7N RanchIFC	Lazy SF21
Alamo City Group4	Littlefoot Cattle Co.30
Atzehoffer Family26	Lost Cause Ranch.....30
	LPJ Ranch.....13, 29
Baring Cattle Co.32	MAS19
Bovine Elite30	McCrary Farms9
Burch Farms19	Monte Christo Ranch1
Brolaco Cattle Co.19,29	
Buresh Cattle Co.30	Pebble Creek Farms27
	Pine Ridge Ranch16,17
Daydream Group23	Reagan, Terry30
Diamond E Cattle Co27	Reavis Farms29, IBC
Estes Ranch.....27	Reed, Jeffrey.....30
Floneca.....13	Reeves, Ronnie30
	RGV Cattle Co.18,29
Golden Star Simbrahs28	Rio Grande Valley Breeders29
Guerra, Victor13, 23	Rodenbeck Family7
Hallak Ranch.....3	Scogin, Cody23
Heart of Texas Association28	Seale, Joe23
Henegens Brothers8	Shallow Water Ranch.....30
Hutto, Kathy30	Smith Genetics2, 5
	Smith Kentucky30
KQ Cattle Co.29	
Johnson Cattle Co.....22	Temperance Livestock6
	Top C Cattle Co.29
La Hacienda Hinojosa22,29	Triple J Ranch18
La Muneca Cattle Co.29, BC	Vela Catle Co.29

Simbrah World is an 8 1/2 x 11 publication, produced by Southern Livestock Publishing and provides news for and about the Simbrah breed.

Space Rates:

Size:	B&W:	1 Extra Color:	4/Color:
Full Page	\$725.00	\$875.00	\$1,100
2/3 Page	575.00	725.00	950.00
1/2 Page	440.00	590.00	815.00
1/3 Page	350.00	500.00	725.00
1/4 Page	220.00	370.00	595.00

Deadlines for Publications

Spring Issue-February 1st
Fall Issue-September 1st

COPY AND CONTRACT REGULATIONS

Advertisers and advertising agencies assume liability for all content of advertisements printed, and also assume liability for any claims arising from any such advertisements made against the publisher. The publisher reserves the right to reject advertising, which is felt unsuitable for publication.

EDITORIAL POLICY

Opinions expressed are the writer's and not necessarily those of Simbrah World.

LAYOUTS AND PROOFS

Although every effort will be made to provide proofs to advertisers on all ads, we only guarantee proofs on ads that arrive in the Southern Livestock Publishing office prior to or on deadline.

Simbrah Publications Committee

Bill Travis, Carlos Guerra, Tim Smith, Trey Baring, Cody Witzkoski, Craig Schultz, Doug Schultz and Richard Foster.

Southern Livestock Publishing, Inc.

Mailing Address:

P.O. Box 791364 • San Antonio, TX 78279-1364

Office Located:

407 Breesport • San Antonio, TX 78216

Phone: 210/524-9697

Fax: 210/524-9690

E-mail: slivestock@southernlivestock.com

Baring Cattle Company



BCC Maverick
2017 National Champion Percentage Bull
ASA# 3203451 API- 94.0
Limited Semen Packages Available!



BCC Power Driver
2017 National Champion Simbrah Bull
2016 National Res. Champion Simbrah Bull
2016 International Res. Champion Simbrah Bull
ASA# 3024151
Limited Semen Packages Available!

**ALAMO CITY
ONLINE SALE
APRIL 3, 2017
CattleInMotion**



BCC Star Struck
Exhibited by Reese Gonzales
2017 San Antonio Division Champions
Many time Champion, sold in
2016 Alamo Sale! ASA# 3165333
Flush Opportunities Available!



Available at Alamo City Sale !
BCC Alexandra – She Sells at Alamo Sale!
Fancy Percentage Female
ASA # 3203452 API – 103.6



Available at Alamo City Sale !
BCC Power Force - He Sells at Alamo Sale!
September born purebred bull
First Power Driver son

Calf Scramble Certificates Accepted



BARING CATTLE COMPANY
6128 S. Loop 1604 E-2
Elmendorf, Texas 78112
210/621-0095 (Ranch) • 210/867-6651 (Trey)
www.baringcattlecompany.com • Se habla español



EXPRESSIVE

And wow is she...

Her two daughters, Razen and Faith, have racked up multiple championships and we have flushed her, so we have a number of high quality individuals from her in our herd. Hagan Smith Expressive is a daughter of Smith Nu Wave II and out of Hagan Smith Irreplaceable, a NF Smith Sargeant x JSSC Perfection N12 daughter. She is that proven cross of Sargeant x Nu Wave and she has top 1% rankings for weaning, yearling, carcass weight and TI. Plus top 10% ranking for maternal weaning weight, 15% for stayability and top 30% for maternal calving ease and API.

We added this donor to our herd, after observing what the Irreplaceable Cow Family was accomplishing. This Cow Family includes the 2012 International Grand Champion Female, Smith CRC Nu Perfection, 2010 International Grand Champion Female, Hagan Smith Show Stopper and other top females. Expressive is also the dam to RFI Bad Medicine, a three-quarter sire by William N Black, who is now working in the RGV Cattle Co. herd.

Congratulations to our customers, Lorelai Hill and Jane Hunt for exhibiting their Expressive daughters to multiple championship honors.

If you are looking for a top replacement female or show heifer, come see ours!



nancy
EXPRESSIVE



RFI Smith Faith-daughter of Expressive and RFI Real Deal
2017 Fort Worth Junior Show Junior Champion
2017 National Champion Simbrah Female
2017 Superbowl and San Antonio Junior Show Reserve Grand Female
Exhibited and owned by Jane Hunt



RFI Razen-daughter of Expressive and Smith Satisfies
Top 20 at the AJSA National Classic
2017 National Reserve Senior Champion Female
2017 Superbowl Reserve Senior Champion Female
Multiple winner at local shows
Exhibited and owned by Lorelai Hill



**Mark your calenders for
Simbrah Synergy X
September 23-24**

**Reavis Farms is a diversified family farm, raising cattle, onions,
watermelons, sunflowers, grain sorghum and cotton.**

REAVIS FARMS, INC.

WAYNE AND JIM BOB REAVIS

(956) 585-6831 • (956) 207-1447, Wayne cell

6801 W. Mile 7 Road • Mission, TX 78574

www.reavisfarms.com • JWReavis@aol.com



LMC WFC Ms. Dream Girl
National & International Champion

FULL SISTERS OF GOLD MEDAL →



LMC Redream
La Muñeca-Flores Champion Donor



LMC 6G Red Rock – Joshua Harris Family
International Champion by LMC HS Rocco



LMC LF Simone – La Muñeca - Sired
by LMC BBS Manziel x LMC Redream



LMC Daydream – V Guerra, Scogin &
Seale - Champion donor dam of champions



LMC Vivian – Floreca Cattle Co.
Champion sired by LMC 6G Rain Cajun



LMC SSC Yolanda – Curt Culpepper
Family - Champion LMC LN 12th Man Baby Doll



LMC Eve – Dr. Mary Tanner Family
Champion donor - sells at LMC GENIEP LUS XVI



LMC LF Making Dreams - Hensgens
Bros. - Sired by WS Beefmaker



LMC Danielle – Bill Meuth Family
Champion LMC Gold Medal Baby Doll



LMC Lucky Charm – LMC, VGG
Flores - Champion Donor for Pops



LMC 6G Sweet Dreams – BETM
Ranch - LMC Gig Em Champion donor



LMC BET-M Candy Girl – Mia Carmen
Ramirez - LMC 6G Rain Cajun x Sweet Dreams



LMC Sunny – Wendell Reeder
Family - Champion and future donor



LMC Keep Dreaming – Ben Hill
Family - Champion LMC Arcaido Daughter



LMC Wheel of Fortune – Baring Cattle
Co. - FBFS Wheelman x LMC Daydream



LMC Gold Medal - LMC Rhino x Dream Girl
2013 National & Reserve International Champion



LMC Midnight Dream – Staviocha
Family - Champion Donor



LMC Bullet Dream – Israel Sanchez
Family - Sired by LMC RFI Smith Red Bullet

LMC Rifleman - Santos Escobar -
LMC LN 12th Man x LMC Daydream

THE DREAM GIRL LEGACY CONTINUES...

We have been breeding Simbrh cattle for 35 years. We have never seen a better made or more productive cow than LMC WFC MS Dream Girl. She looked great the day she was born and won it all for Jordan Graham including two National, one International, one Super Bowl, many TCCA and the \$10,000 San Antonio Jr. Show. She produced 48 calves sired by 11 different sires. This ad is a tribute to the legacy she leaves behind as her progeny and grand progeny will continue to improve the breed for many years to come.



6G

RANCH
Michael Graumann
michaelg@unitedag.net

BETM
RANCH
Dr. Ernesto G. Guerra
Betmguerra@yahoo.com

LA MUÑECA

CATTLE CO.
Lammecacattle@aol.com
956 802 1641

LOUIE FLORES
FAMILY
Louie@shortsammual.com
956 457 0205

% PROGENY



LMC Pioneer Woman – Dream Girl Team
+LMC LF Ambassador 38 x 58 Donor



LMC Steel A Force – John Mau
Family - SVF Steel Force Baby Doll



One of three Mt. NLC Upgrade x Dream
Girl daughters owned by Floreca

UPCOMING EVENTS

LMC \$7,500 JACKPOT SHOW MARCH 24

LMC \$7,500 SELLABRATION SHOW

MARCH 25

LMC GENIEPLUS ONLINE SALE XVI

MARCH 25-28

WWW.CATTLEINMOTION.COM